



 JONES
HOTEL GROUP

CHARDON
KING VALLEY

ONE OF THE WORLD'S CHAMPION WINE
MAKING REGIONS IS BALANCED BY NATURE

JONES
HOTEL GROUP

JONES
HOTEL GROUP

A SPECIAL WELCOME TO GROUPS & TOURS

THE JONES HOTEL GROUP WELCOMES THE OPPORTUNITY TO HOST COACH COMPANIES AND TOUR OPERATORS AT QUALITY HOTEL WANGARATTA GATEWAY, QUALITY HOTEL ON OLIVE AND THE QUALITY RESORT SIESTA.

WE ARE A SIGNIFICANT PLAYER IN THE ACCOMMODATION SECTOR, WITH THREE PROPERTIES OWNED AND OPERATED BY OUR FAMILY COMPANY IN SOUTHERN NSW AND NORTHEAST VICTORIA.

PART OF THE CHOICE HOTELS, QUALITY NETWORK YOU CAN BE SURE OF A UNIQUE EXPERIENCE, QUALITY AMENITIES AND PERSONALISED SERVICE.

WITH A FULL RANGE OF DINING OPTIONS AND ROOM TYPES, AN ARRAY OF RECREATIONAL AND LEISURE FACILITIES, EACH OF OUR PROPERTIES WILL BECOME A MEMORABLE VISIT ON YOUR ITINERARY.

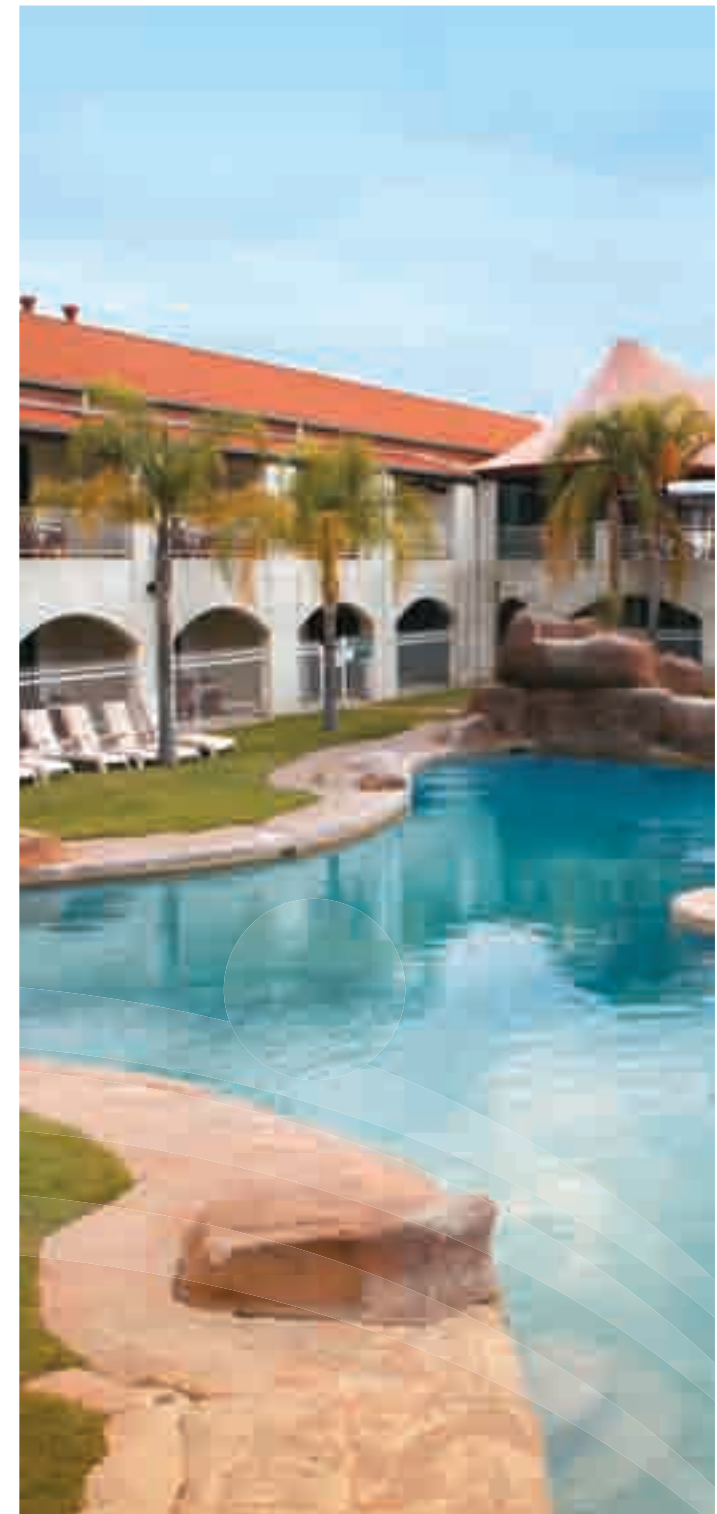
WE WARMLY WELCOME YOU AND YOUR GUESTS.

01



QUALITY
RESORTSIESTA™
ALBURY

QUALITY RESORT SIESTA ALBURY
416-422 WAGGA ROAD ALBURY NSW 2641
TELEPHONE +612 6025 4555
FACSIMILE +612 6040 1664
EMAIL INFO@SIESTA.COM.AU



WHEN WHAT YOU NEED IS SOMETHING SPECIAL

FACILITIES

AT THE QUALITY RESORT SIESTA ALBURY, THE REAL WORLD SEEMS FAR AWAY. LOCATED IN PICTURESQUE ALBURY, A REGIONAL CITY THAT PRIDES ITSELF ON A CONTEMPORARY RELAXED WAY OF LIFE, THE SIESTA RESORT IS A CHARMING, FAMILY-OWNED HIDEAWAY THAT COMBINES QUALITY SERVICE AND SUPERIOR FACILITIES WITH COUNTRY HOSPITALITY – AND MORE THAN JUST A LITTLE TOUCH OF COLOURFUL MEXICO.

4.5 STARS, 88 SUITES, 5 LANDSCAPED ACRES. SO MANY OF OUR GUESTS – FAMILIES, BUSINESS TRAVELLERS, HOLIDAY-MAKERS, AND EVENT ORGANISERS – KEEP RETURNING, YEAR AFTER YEAR.

IT'S NO SURPRISE TO THEM THAT THE SIESTA RESORT WAS AWARDED THE BEST PROPERTY WITHIN THE CHOICE HOTELS RANGE.

COMBINING THE SUPERIOR FACILITIES YOU EXPECT WITH COUNTRY CHARM AND THE TRADITION OF MEXICAN HOSPITALITY, THE QUALITY RESORT SIESTA ALBURY OFFERS A SINGULAR AMBIENCE THAT'S RELAXED AND SO VERY, VERY ENJOYABLE. THERE ARE SO MANY RECREATIONAL AND LEISURE ACTIVITIES ON-HAND, AND SO MANY ATTRACTIONS TO DISCOVER.

FACILITIES INCLUDE:

- 24-HOUR RECEPTION
- UNDERCOVER CARPARKING
- LICENSED RESTAURANTS (TWO)
- COCKTAIL LOUNGE AND WINE BAR
- VIDEO HIRE
- CURRENCY EXCHANGE
- CONCIERGE
- DISABLED FACILITIES
- SAFETY BOX FACILITIES
- LAUNDRY/DRY CLEANING
- SECRETARIAL SERVICES
- BABYSITTING FACILITIES (AVAILABLE ON REQUEST)
- COMPLIMENTARY NEWSPAPERS (MONDAY TO FRIDAY)
- SHOPPING COMPLEX (WITHIN WALKING DISTANCE)
- COURTESY COACH (AVAILABLE ON REQUEST)
- GYMNASIUM
- HEATED INDOOR POOL PLUS SOMBRERO SPA POOL
- SALTWATER LAGOON-STYLE OUTDOOR POOL
- SPAS (THREE)
- SAUNA
- SOLARIUM
- HALF TENNIS COURT
- SQUASH COURT
- JOGGING/CYCLING TRACKS
- GAMES ROOM WITH PINBALL MACHINES, TABLE TENNIS AND POOL TABLE
- CHESS SET
- MINI-GOLF COURSE
- CHILDREN'S PLAYGROUND
- UNDERCOVER BARBEQUE FACILITIES



WINING & DINING

WINING AND DINING AT QUALITY RESORT SIESTA ALBURY IS FOR EVERY TASTE. CHOOSE FROM THE WELL-REGARDED, WELL-KNOWN BULLRING RESTAURANT OR THE MORE CASUAL CACTUS CANTINA BISTRO. YOU CAN CHOOSE OUR UNDERCOVER BARBEQUE FACILITIES OR OUR CHEF CAN PROVIDE A HAMPER.

ALBURY IS NOT FAR FROM WORLD-FAMOUS WINE-GROWING REGIONS AND AT THE SIESTA RESORT LICENSED RESTAURANTS YOU CAN SIP RED, WHITE, AND FORTIFIED WINES RANKED AMONG THE BEST IN THE WORLD. EXPERIENCE THE REGIONAL DELIGHTS AND GOURMET PRODUCE OF SOUTHERN NEW SOUTH WALES AND NORTH EAST VICTORIA, WITH A LITTLE FLAVOUR OF MEXICO.

THE BULLRING RESTAURANT

SPECIALISING IN STEAKS AND SEAFOOD, THE FINEST FOOD AND WINES, SURROUNDS REMINISCENT OF A PLACE IN MEXICO AND AN ATMOSPHERE NOT TO BE FORGOTTEN

THE CACTUS CANTINA

THE CANTINA BISTRO IS THE PLACE FOR RELAXATION, RESORT-STYLE, PROVIDING BUFFET BREAKFASTS AND DINNERS OVERLOOKING THE LAGOON-STYLE SWIMMING POOL.

THE COCKTAIL LOUNGE

THE BULLRING COCKTAIL LOUNGE IS OPEN SEVEN NIGHTS A WEEK WITH A PIANIST PLAYING ON FRIDAY AND SATURDAY EVENINGS.

GROUPS

GROUP CATERING

SHOULD YOU OPT TO PACKAGE A DAY TRIP INTO YOUR ITINERARY, THE SIESTA CAN PROVIDE ONE OF TWO CATERING OPTIONS:

1. **PICNIC HAMPER** – A PICNIC LUNCH OF FRESHLY CUT SANDWICHES, FRESH FRUIT, HOME MADE CAKES AND FRUIT JUICE
2. **BBQ HAMPER** – A JONES CUT OF STEAK, HOMEMADE SALADS, DELICIOUS DESERTS AND FRUIT JUICE

DINNER – OUR RENOWN CHEFS WILL PROVIDE A SUPERB 2 OR 3 COURSE A LA CARTE MENU

GROUP ACCOMMODATION RATES

THE SIESTA'S COACH AND TOUR OPERATOR ACCOMMODATION RATES ARE HIGHLY COMPETITIVE. THE SIESTA RESORT IS A 4.5 STAR PROPERTY AND YOU WILL EXPERIENCE SERVICE OF THE HIGHEST STANDARD. AN ALLOCATED OFF-STREET AREA FOR COACH PARKING AND CONVENIENT FACILITIES FOR WASHING THE COACH ARE PROVIDED.



LOCATION

LOCATION

LOCATED ON THE BANKS OF THE MAGNIFICENT MURRAY RIVER, BORDERING NEW SOUTH WALES AND VICTORIA, THE ALBURY WODONGA REGION SERVICES A POPULATION OF 160,000. WITH AUSTRALIA'S GREATEST RIVER AT ITS DOORSTEP AND GREEN OPEN VISTAS IN EVERY DIRECTION, ALBURY WODONGA IS SITUATED IN THE FOOTHILLS OF AUSTRALIA'S BREATHTAKING HIGH COUNTRY.

ALBURY IS LOCATED STRATEGICALLY BETWEEN MELBOURNE AND SYDNEY HAS A VARIETY OF DAY TRIPS WITHIN AN HOUR'S DRIVE AND STUNNING SCENERY IN EVERY DIRECTION.

ALBURY IS SERVICED BY THE HUME FREEWAY, MAJOR RAIL NETWORKS AND THE ALBURY AIRPORT WITH FLIGHTS DAILY FROM SYDNEY, MELBOURNE AND CANBERRA.

FROM:	
MELBOURNE CBD	300KM
SYDNEY CBD	460KM
CANBERRA CBD	280KM
ALBURY AIRPORT	5KM
RAILWAY STATION	4KM
SHOPPING CENTRE	1KM



CLIMATE

CLIMATE

THE ALBURY WODONGA REGION EXPERIENCES A MEDITERRANEAN CLIMATE WHICH MEANS THE CHANGES OF SEASON ARE QUITE VIVID – WITH HOT DRY SUMMERS, MILD AUTUMNS AND SPRINGS AND COOL WINTERS – EXPECT LONG STRETCHES OF CLEAR BLUE SKY IN SUMMER AND CRISP SUNNY DAYS IN WINTER.



SUGGESTED ITINERARY

SUGGESTED DAY TRIPS AND LOCAL ATTRACTIONS TO PACKAGE INTO YOUR GROUP ITINERARY:

BEECHWORTH

VICTORIA'S BEST PRESERVED GOLD TOWN. JUST 45 MINUTES FROM ALBURY IN THE FOOTHILLS OF THE VICTORIAN ALPS, THE TOWN WAS CLOSELY ASSOCIATED WITH NED KELLY AND HIS GANG, HAS MUSEUMS DEDICATED TO THE CHINESE GOLD MINERS, 32 BUILDINGS UNDER NATIONAL TRUST CLASSIFICATION, A RANGE OF GALLERIES, POTTERIES, THE FAMOUS BEECHWORTH BAKERY AND MANY SCENIC SPOTS PERFECT FOR A PICNIC STOP.

RUTHERGLEN

SHORTLY AFTER GOLD WAS FOUND IN RUTHERGLEN, THE FIRST VINES WERE PLANTED IN THE 1850S TO CREATE WHAT IS NOW A REGION RENOWN FOR NOT ONLY RED AND WHITE, BUT FORTIFIED WINES, RANKED AMONG THE BEST IN THE WORLD. LOCATED 40 MINUTES FROM ALBURY, MANY OF THE WINERIES ARE OPEN FOR TASTINGS AND SALES SEVEN DAYS A WEEK. CAMPBELLS, ALL SAINTS AND STANTON & KILLEEN ARE THREE OF OUR FAVOURITE SUGGESTIONS.

MILAWA GOURMET REGION

REPRESENTING THE EPITOME OF WINE AND FOOD EXPERIENCES, THIS SPECIAL PART OF THE KING VALLEY WINE REGION IS ONE HOUR FROM ALBURY AND HOME TO THE RENOWN BROWN BROTHERS CELLAR DOOR AND RESTAURANT. A VISIT TO THE MILAWA CHEESE FACTORY FOR AN EDUCATIONAL CHEESE TASTING, COFFEE AND CAKE, VIEWING OF THE LATEST EXHIBITION AT THE MUSE GALLERY OR MILAWA MUSTARDS, THE OLIVE SHOP OR ONE OF THE OTHER CELLAR DOORS OR RESTAURANTS IS ALSO SUGGESTED.

HUME WEIR TROUT FARM

SITUATED JUST BELOW THE SCENIC HUME WEIR WALL, GROUP BOOKINGS ARE WELCOME WITH THE OBJECTIVE OF CATCHING A COLOURFUL RAINBOW TROUT. LANDSCAPED GARDENS, STUNNING SURROUNDING SCENERY AND PICNIC/CATERING FACILITIES AVAILABLE.

LAKE HUME

SITUATED NORTH OF ALBURY WODONGA, LAKE HUME PROVIDES VISITORS WITH AN OPPORTUNITY TO ENJOY THE OUTDOORS. (DON'T FORGET THAT THE LAKE HUME RESORT HAS HIRE BOATS AVAILABLE FOR FISHING AND SAILING.)

ON THE MIGHTY MURRAY RIVER

THE MIGHTY MURRAY RIVER FLOWS THROUGH ALBURY AND IS ONE OF OUR MAJOR NATURAL ATTRACTIONS. THE P.S CUMBEROONA PROVIDES THE IDEAL PLATFORM TO VIEW THIS ICONIC AUSTRALIAN RIVER WITH DAILY CRUISES AND THE OPTION OF DEVONSHIRE TEAS, LIGHT MEALS, A BUFFET OR THREE-COURSE DINNER.





QUALITY
HOTEL ON OLIVE™
ALBURY

QUALITY HOTEL ON OLIVE
579 OLIVE STREET, ALBURY NSW 2640
TELEPHONE +612 6021 6100
FACSIMILE +612 6041 1803
EMAIL INFO@HOTELONOLIVE.COM.AU



THE QUALITY HOTEL ON OLIVE MAKES A LASTING IMPRESSION

WITH A BLENDED ATMOSPHERE OF BUSINESS AND PLEASURE, HOTEL ON OLIVE HAS STYLISH ACCOMMODATION AND SUPERIOR FACILITIES. IDEALLY APPOINTED AND PERFECTLY LOCATED IN THE CENTRE OF ALBURY, YOU ARE A SHORT WALK AWAY FROM SHOPPING, CAFES, BARS AND CLUBS, AS WELL AS THE BOTANIC GARDENS, THE ALBURY CONVENTION CENTRE AND THE HIGHLY REGARDED REGIONAL ART GALLERY.

THE QUALITY HOTEL ON OLIVE ALSO PLACES YOU RIGHT IN THE HEART OF THE GOURMET FOOD AND WINE REGIONS AND THE NATURAL BEAUTY OF THE HIGH COUNTRY.

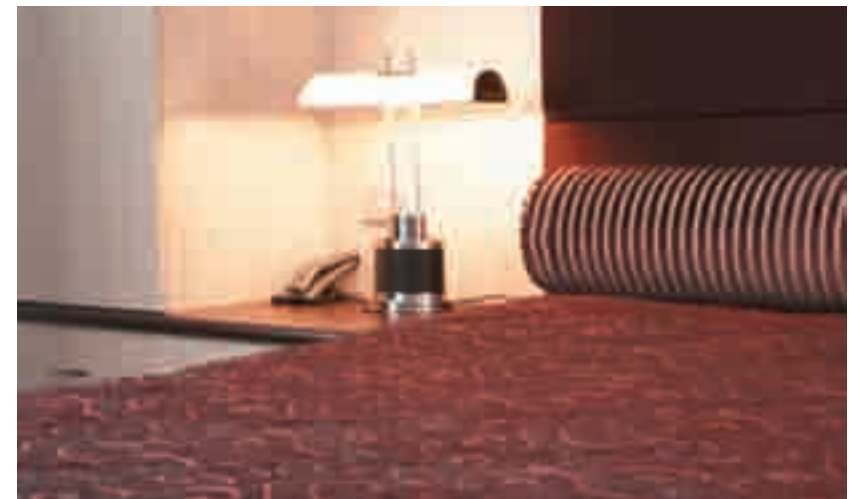
STYLE, SERVICE, AND SUPERIOR FACILITIES MAKE THE QUALITY HOTEL ON OLIVE THE IDEAL CHOICE.

FACILITIES

- 24-HOUR RECEPTION
- OFF-STREET FREE CAR PARKING (ALSO FOR LARGE VEHICLES)
- LAUNDRY AND DRY CLEANING
- LIFT ACCESS TO ALL ROOMS
- CURRENCY EXCHANGE
- COCKTAIL LOUNGE AND WINE BAR
- SAFETY BOX FACILITIES
- BABYSITTING (AVAILABLE ON REQUEST)
- SWIMMING POOL
- EVENT/CONFERENCE FACILITIES
- WALKING DISTANCE TO ALBURY'S SHOPPING PRECINCT
- RESTAURANT 579 ON OLIVE OPEN 7 DAYS FOR BREAKFAST AND DINNER

RECREATIONAL ACTIVITIES

- JOGGING/CYCLING TRACKS – INCLUDING THE WELL-KNOWN MONUMENT HILL TRACKS
- REGIONAL ART GALLERY
- WINERIES
- MURRAY RIVER PADDLESTEAMER AND CANOE HIRE
- BOTANICAL GARDENS
- SHOPPING IN ALBURY'S SPECIALTY STORES
- WINING AND DINING IN ALBURY'S CAFES, RESTAURANTS AND BARS
- CINEMA CENTRE



WINING & DINING

ENJOY A FINE DINING EXPERIENCE IN THE CONTEMPORARY, REFRESHING ENVIRONMENT OF RESTAURANT 579 ON OLIVE. WITH A MODERN AUSTRALIAN MENU WITH MEDITERRANEAN INFLUENCES FEATURING SEASONAL PRODUCE FROM THE LOCAL GOURMET REGIONS, A SPECIAL SELECTION OF REGIONAL WINES, AND EXCEPTIONAL, PROFESSIONAL SERVICE, RESTAURANT 579 IS A FAVOURITE FOR LOCALS AND VISITORS ALIKE.

CELEBRATE, REVEL AND RELAX.

GROUPS

GROUP CATERING

SHOULD YOU OPT TO PACKAGE A DAY TRIP INTO YOUR ITINERARY, THE HOTEL ON OLIVE CATERING TEAM CAN PROVIDE ONE OF TWO OPTIONS:

1. **PICNIC HAMPER** – A PICNIC LUNCH OF FRESHLY CUT SANDWICHES, FRESH FRUIT, HOME MADE CAKES AND FRUIT JUICE
2. **BBQ HAMPER** – A JONES CUT OF STEAK, HOMEMADE SALADS, DELICIOUS DESERTS AND FRUIT JUICE

DINNER – OUR RENOWN CHEFS WILL PROVIDE A SUPERB 2 OR 3 COURSE AL A CARTE MENU

GROUP ACCOMMODATION RATES

OUR COACH AND TOUR OPERATOR ACCOMMODATION RATES ARE HIGHLY COMPETITIVE – WITH STYLE, SERVICE, SUPERIOR FACILITIES AND A 'PERFECT' CBD LOCATION – QUALITY HOTEL ON OLIVE IS THE IDEAL CHOICE. AN ALLOCATED OFF-STREET AREA FOR COACH PARKING IS ALSO PROVIDED.



LOCATION

CLIMATE

LOCATION

LOCATED ON THE BANKS OF THE MAGNIFICENT MURRAY RIVER, BORDERING NEW SOUTH WALES AND VICTORIA, THE ALBURY WODONGA REGION SERVICES A POPULATION OF 160,000. WITH AUSTRALIA'S GREATEST RIVER AT ITS DOORSTEP AND GREEN OPEN VISTAS IN EVERY DIRECTION, ALBURY WODONGA IS SITUATED IN THE FOOTHILLS OF AUSTRALIA'S HIGH COUNTRY.

ALBURY IS LOCATED STRATEGICALLY BETWEEN MELBOURNE AND SYDNEY HAS A VARIETY OF DAY TRIPS WITHIN AN HOUR'S DRIVE AND STUNNING SCENERY IN EVERY DIRECTION.

ALBURY IS SERVICED BY THE HUME FREEWAY, MAJOR RAIL NETWORKS AND THE ALBURY AIRPORT WITH FLIGHTS DAILY FROM SYDNEY, MELBOURNE AND CANBERRA.

THE ALBURY WODONGA REGION EXPERIENCES A MEDITERRANEAN CLIMATE WHICH MEANS THE CHANGES OF SEASON ARE QUITE VIVID – WITH HOT DRY SUMMERS, MILD AUTUMNS AND SPRINGS AND COOL WINTERS – EXPECT LONG STRETCHES OF CLEAR BLUE SKY IN SUMMER AND CRISP SUNNY DAYS IN WINTER.



FROM:	
MELBOURNE CBD	300 KILOMETRES
SYDNEY CBD	460 KILOMETRES
CANBERRA CBD	280 KILOMETRES
ALBURY AIRPORT	5 KILOMETRES
RAILWAY STATION	2 KILOMETRES
SHOPPING CENTRE	100 METRES



SUGGESTED ITINERARY

WHEN YOU STAY AT THE QUALITY HOTEL ON OLIVE, ALBURY, THERE'S A LOT TO EXPERIENCE. EXPLORE THE SHOPPING, CAFÉS AND RESTAURANTS OF THE ALBURY CITY CENTRE. UNEARTH SOME HISTORIC LEGENDS, TOUR THE TOWNS, TRAVEL BY RIVER, SAMPLE THE GOURMET TRAILS AND WINERIES, SOAK UP THE ART AND CULTURE, AND EXPERIENCE STUNNING NATURAL BEAUTY.

SUGGESTED DAY TRIPS AND LOCAL ATTRACTIONS TO PACKAGE INTO YOUR GROUP ITINERARY:

BEECHWORTH

VICTORIA'S BEST PRESERVED GOLD TOWN. JUST 45 MINUTES FROM ALBURY IN THE FOOTHILLS OF THE VICTORIAN ALPS, THE TOWN WAS CLOSELY ASSOCIATED WITH NED KELLY AND HIS GANG, HAS MUSEUMS DEDICATED TO THE CHINESE GOLD MINERS, 32 BUILDINGS UNDER NATIONAL TRUST CLASSIFICATION, A RANGE OF GALLERIES, POTTERIES, THE FAMOUS BEECHWORTH BAKERY AND MANY SCENIC SPOTS PERFECT FOR A PICNIC STOP.

RUTHERGLEN

SHORTLY AFTER GOLD WAS FOUND IN RUTHERGLEN, THE FIRST VINES WERE PLANTED IN THE 1850S TO CREATE WHAT IS NOW A REGION RENOWN FOR NOT ONLY RED AND WHITE, BUT FORTIFIED WINES, RANKED AMONG THE BEST IN THE WORLD. LOCATED 40 MINUTES FROM ALBURY, MANY OF THE WINERIES ARE OPEN FOR TASTINGS AND SALES SEVEN DAYS A WEEK. CAMPBELLS, ALL SAINTS AND STANTON & KILLEEN ARE THREE OF OUR FAVOURITE SUGGESTIONS.

MILAWA GOURMET REGION

REPRESENTING THE EPITOME OF WINE AND FOOD EXPERIENCES, THIS SPECIAL PART OF THE KING VALLEY WINE REGION IS ONE HOUR FROM ALBURY AND HOME TO THE RENOWN BROWN BROTHERS CELLAR DOOR AND RESTAURANT. A VISIT TO THE MILAWA CHEESE FACTORY FOR AN EDUCATIONAL CHEESE TASTING, COFFEE AND CAKE, VIEWING OF THE LATEST EXHIBITION AT THE MUSE GALLERY OR MILAWA MUSTARDS, THE OLIVE SHOP OR ONE OF THE OTHER CELLAR DOORS OR RESTAURANTS IS ALSO SUGGESTED.

HUME WEIR TROUT FARM

SITUATED JUST BELOW THE SCENIC HUME WEIR WALL, GROUP BOOKINGS ARE WELCOME WITH THE OBJECTIVE OF CATCHING A COLOURFUL RAINBOW TROUT. LANDSCAPED GARDENS, STUNNING SURROUNDING SCENERY AND PICNIC/CATERING FACILITIES AVAILABLE.

LAKE HUME

SITUATED NORTH OF ALBURY WODONGA, LAKE HUME PROVIDES VISITORS WITH AN OPPORTUNITY TO ENJOY THE OUTDOORS. (DON'T FORGET THAT THE LAKE HUME RESORT HAS HIRE BOATS AVAILABLE FOR FISHING AND SAILING.)

ON THE MIGHTY MURRAY RIVER

THE MIGHTY MURRAY RIVER FLOWS THROUGH ALBURY AND IS ONE OF OUR MAJOR NATURAL ATTRACTIONS. THE P.S CUMBEROONA PROVIDES THE IDEAL PLATFORM TO VIEW THIS ICONIC AUSTRALIAN RIVER WITH DAILY CRUISES AND THE OPTION OF DEVONSHIRE TEAS, LIGHT MEALS, A BUFFET OR THREE-COURSE DINNER.

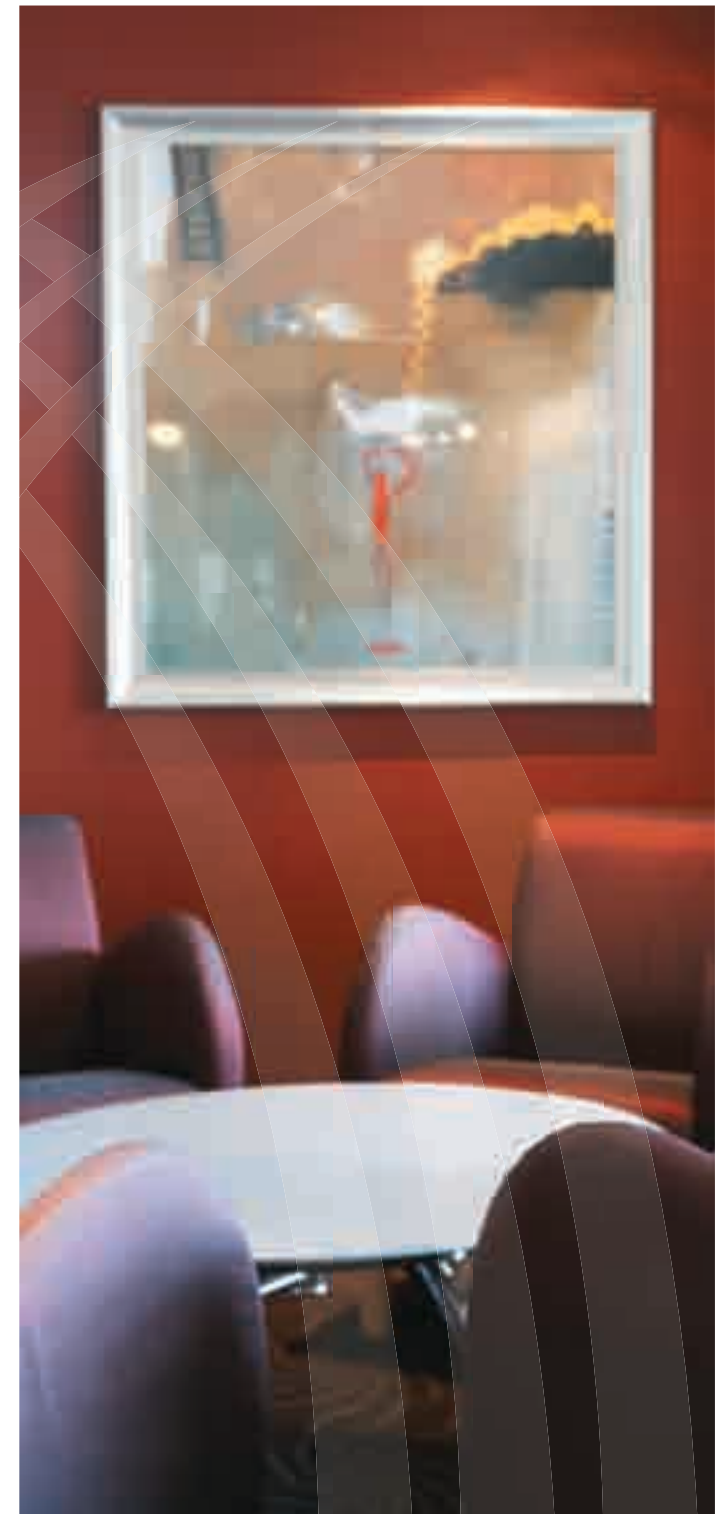
11





QUALITY HOTEL
GATEWAYTM
WANGARATTA

QUALITY HOTEL WANGARATTA GATEWAY
29-37 RYLEY STREET WANGARATTA VIC 3677
TELEPHONE +613 5721 8399
FACSIMILE +613 5721 3879
EMAIL INFO@WANGARATTAGATEWAY.COM.AU



WHEN DISTINCTION MATTERS

THE AWARD-WINNING QUALITY HOTEL WANGARATTA GATEWAY IS EXCELLENCE ON EVERY LEVEL.

FOCUSED ON PRIVACY, COMFORT AND STYLE, THE 61 SUITES OF THE GATEWAY OFFER YOU 4.5 STAR LUXURY.

SPACIOUS, TASTEFULLY DECORATED AND WELL-APPOINTED WITH ALL THE MODERN CONVENIENCES YOU EXPECT FROM AN INNER-CITY HOTEL TOGETHER WITH THE BENEFITS OF A DISTINCTIVE REGIONAL LOCATION RENOWN FOR WORLD-CLASS WINERIES, GOURMET FOOD, SPECTACULAR SCENERY, NATURAL BEAUTY, HISTORIC LEGENDS AND HERITAGE TOWNS.

CHOOSE FROM STANDARD, SPA SUITES, FAMILY ROOMS, CORPORATE DELUXE AND PREMIER SUITES – THEN RELAX AT THE RESTAURANT, LOUNGE AND WINE BAR, SPA, SAUNA AND GYM.

AT QUALITY HOTEL WANGARATTA GATEWAY WE PRIDE OURSELVES ON OUR HOTEL'S PERSONALISED SERVICES, SUPERIOR ACCOMMODATION, AND MAKING YOUR VISIT A PLEASURE, EVERY TIME.

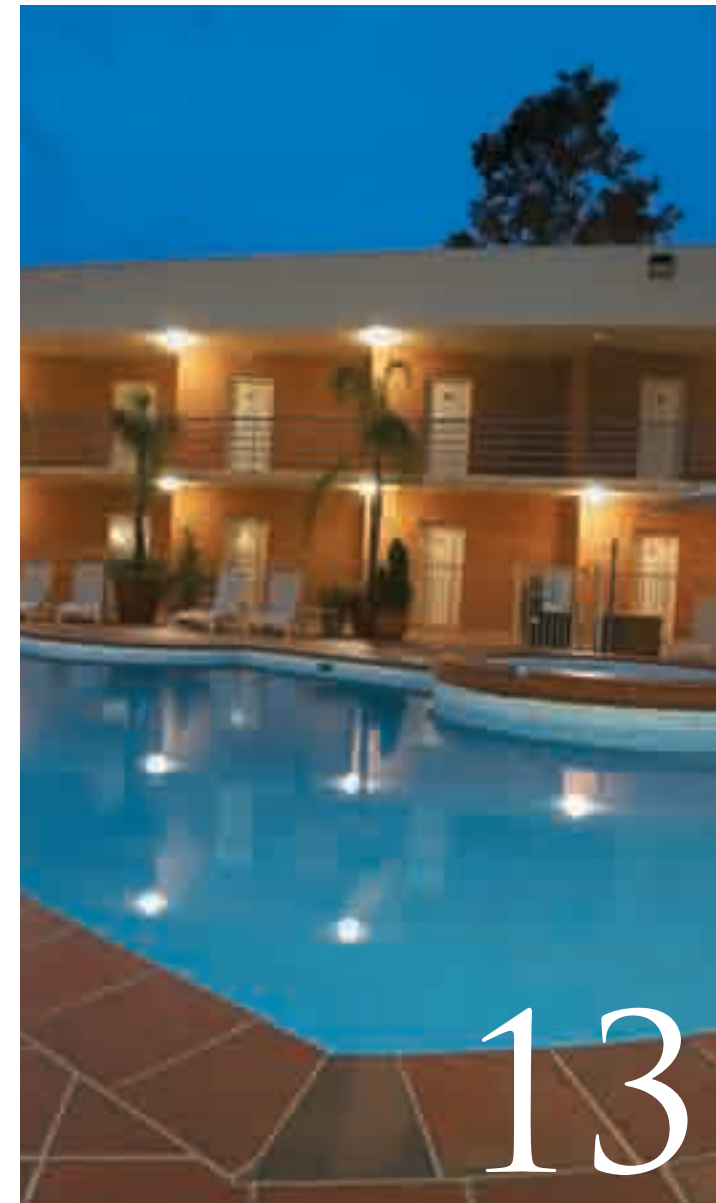
FACILITIES

FACILITIES

- 24 HOUR RECEPTION
- SECRETARIAL SERVICES
- CONCIERGE
- SAFETY BOX FACILITIES
- CURRENCY EXCHANGE
- HEATED OUTDOOR POOL, SPA AND SAUNA
- GYMNASIUM
- IN-HOUSE MOVIES
- MINI-BAR
- COMPLIMENTARY NEWSPAPERS (MONDAY – FRIDAY)
- BABYSITTING (AVAILABLE ON REQUEST)
- ATRIUM RESTAURANT
- COCKTAIL LOUNGE AND WINE BAR
- LIFT ACCESS TO ALL ROOMS
- TWO BLOCKS FROM THE CBD
- PAY TELEVISION

RECREATIONAL ACTIVITIES

- LAWN TENNIS COURTS
- JOGGING CYCLING TRACKS (INCLUDING MURRAY TO THE MOUNTAINS RAILTRAIL)
- ART GALLERY
- CINEMA CENTRE
- REGIONAL WINERY TOURS
- GOLF COURSES (TWO WITHIN WANGARATTA)
- SHOPPING PRECINCT WITH SPECIALTY STORES



WINING & DINING

GROUPS

AT QUALITY HOTEL WANGARATTA GATEWAY YOU CAN ENJOY ALL FOUR SEASONS. IN OUR ATRIUM RESTAURANT YOU CAN SAMPLE THE FINEST FOOD AND WINES NORTH-EAST VICTORIA HAS TO OFFER - ALL AT ITS SEASONAL BEST. OPEN EVERY DAY, THE ATRIUM PRESENTS THE REGION'S FOOD AND WINE WITH AN EMPHASIS ON ORIGINALITY, FLAVOUR AND PRESENTATION - ACCOMPANIED BY EXCEPTIONAL SERVICE.

AT THE ATRIUM LOUNGE YOU CAN ENJOY A QUIET ALE AT THE BAR OR TRY ONE OF OUR SPECIAL COCKTAILS. TAKE PLEASURE IN A DRINK BY THE BAR OR POOLSIDE UNDER THE BOARDWALK, WHICH IS HEATED DURING THE COOLER MONTHS. SAMPLE A LOCAL WINE FROM THE SURROUNDING KING VALLEY, RUTHERGLEN AND BECHWORTH WINE REGIONS.



GROUP CATERING

THE GATEWAY'S TEAM OF RENOWN CHEFS ARE HAPPY TO PROVIDE THE FOLLOWING CATERING OPTIONS, SHOULD YOU OPT TO PACKAGE A DAY TRIP INTO YOUR ITINERARY:

1. **PICNIC HAMPER** – A PICNIC LUNCH OF FRESHLY CUT SANDWICHES, FRESH FRUIT, HOME MADE CAKES AND FRUIT JUICE
2. **BBQ HAMPER** – A JONES CUT OF STEAK, HOMEMADE SALADS, DELICIOUS DESERTS AND FRUIT JUICE

DINNER – OUR RENOWN CHEFS WILL PROVIDE A SUPERB 2 OR 3 COURSE AL A CARTE MENU

GROUP ACCOMMODATION RATES

OUR COACH AND TOUR OPERATOR ACCOMMODATION RATES ARE HIGHLY COMPETITIVE – WE PRIDE OURSELVES ON OUR HOTEL'S PERSONALISED SERVICES, SUPERIOR ACCOMMODATION, AND MAKING YOUR VISIT A PLEASURE, EVERY TIME.

AN ALLOCATED OFF-STREET AREA FOR COACH PARKING AND WASHING IS ALSO PROVIDED.



LOCATION

LOCATION

THE WANGARATTA GATEWAY PLACES YOU RIGHT IN THE HEART OF VICTORIA'S NORTH-EAST – THE GATEWAY TO THE MILAWA GOURMET REGION, VICTORIA'S SKI-FIELDS AND SOME OF THE MOST ESTABLISHED WINE REGIONS IN AUSTRALIA INCLUDING RUTHERGLEN, GLENROWAN, AND THE KING AND ALPINE VALLEYS.

YOU'LL FIND OUR HOTEL IN THE CENTRAL BUSINESS DISTRICT, IDEALLY LOCATED 2.5 HOURS FROM MELBOURNE, 45 MINUTES FROM ALBURY AND 60 MINUTES FROM BRIGHT. THE MILAWA GOURMET REGION IS JUST 10 MINUTES DOWN THE ROAD, THE VILLAGES OF RUTHERGLEN AND BEECHWORTH A 30 MINUTE DRIVE, AND VICTORIA'S SKI FIELDS APPROXIMATELY AN HOUR AND A HALF BY CAR, DEPENDING ON THE TIME OF YEAR.

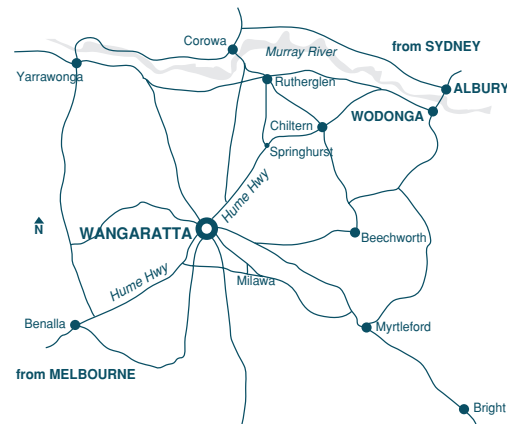
WANGARATTA IS SERVICED BY THE HUME FREEWAY, MAJOR RAIL NETWORKS AND THE REGIONAL AIRPORTS OF WANGARATTA AND ALBURY.

FROM MELBOURNE	235KM
SYDNEY	647KM
ALBURY	75KM
WANGARATTA AIRPORT	5KM
WANGARATTA RAILWAY STATION	0.8KM
SHOPPING CENTRE	1KM

CLIMATE

CLIMATE

THE NORTH EAST OF VICTORIA IS TRULY A DESTINATION THAT SHOWCASES THE FOUR SEASONS– WITH HOT DRY SUMMERS, MILD AUTUMNS AND SPRINGS AND COOL WINTERS – EXPECT LONG STRETCHES OF CLEAR BLUE SKY IN SUMMER AND CRISP SUNNY DAYS IN WINTER.



SUGGESTED ITINERARY

QUALITY HOTEL WANGARATTA GATEWAY IS RIGHT IN THE HEART OF NORTH-EAST VICTORIA. HERE, HERITAGE TOWNS AND HISTORIC LEGENDS, WINERIES, GOURMET PRODUCE TRAILS AND SKI-FIELDS ARE RIGHT AT YOUR DOOR. WHETHER IT'S A RODEO, SOME WORLD-CLASS JAZZ, THE LATEST AGRICULTURAL ADVANCEMENTS, A DRAMATIC NED KELLY RE-ENACTMENT OR A BROWN BROTHERS WINE TASTING THAT TAKES YOUR FANCY, IT'S HAPPENING HERE.

SUGGESTED DAY TRIPS AND LOCAL ATTRACTIONS TO PACKAGE INTO YOUR GROUP ITINERARY:

BEECHWORTH

VICTORIA'S BEST PRESERVED GOLD TOWN. JUST 30 MINUTES FROM WANGARATTA IN THE FOOTHILLS OF THE VICTORIAN ALPS, THE TOWN WAS CLOSELY ASSOCIATED WITH NED KELLY AND HIS GANG, HAS MUSEUMS DEDICATED TO THE CHINESE GOLD MINERS, 32 BUILDINGS UNDER NATIONAL TRUST CLASSIFICATION, A RANGE OF GALLERIES, POTTERIES, THE FAMOUS BEECHWORTH BAKERY AND MANY SCENIC SPOTS PERFECT FOR A PICNIC STOP.



RUTHERGLEN

SHORTLY AFTER GOLD WAS FOUND IN RUTHERGLEN, THE FIRST VINES WERE PLANTED IN THE 1850S TO CREATE WHAT IS NOW A REGION RENOWN FOR NOT ONLY RED AND WHITE, BUT FORTIFIED WINES, RANKED AMONG THE BEST IN THE WORLD. LOCATED 30 MINUTES FROM WANGARATTA, MANY OF THE WINERIES ARE OPEN FOR TASTINGS AND SALES SEVEN DAYS A WEEK. CAMPBELLS, ALL SAINTS AND STANTON & KILLEEN ARE THREE OF OUR FAVOURITE SUGGESTIONS.

BRIGHT AND THE ALPINE VALLEYS

STRETCHING FROM THE SNOWFIELDS OF FALLS CREEK, MT BUFFALO AND HOTHAM, ALONG THE KIEWA AND OVENS RIVERS, THE ALPINE VALLEYS' VIBRANT TOWNSHIPS OF BRIGHT, MYRTLEFORD AND MT. BEAUTY OFFER THE PERFECT DAY TRIP FROM WANGARATTA. THE CLIMATE SUPPORTS A HUGE RANGE OF AGRICULTURAL ENTERPRISES FROM DEER, TROUT AND BERRY FARMS TO NUT GROVES, APPLE ORCHARDS, ASPARAGUS, BREWERIES AND WINERIES.

MILAWA GOURMET REGION

REPRESENTING THE EPITOME OF WINE AND FOOD EXPERIENCES, THIS SPECIAL PART OF THE KING VALLEY WINE REGION IS JUST 10 MINUTES FROM WANGARATTA AND HOME TO THE RENOWN BROWN BROTHERS CELLAR DOOR AND RESTAURANT. A VISIT TO THE MILAWA CHEESE FACTORY FOR AN EDUCATIONAL CHEESE TASTING, COFFEE AND CAKE, VIEWING OF THE LATEST EXHIBITION AT THE MUSE GALLERY OR MILAWA MUSTARDS, THE OLIVE SHOP OR ONE OF THE OTHER CELLAR DOORS OR RESTAURANTS IS ALSO SUGGESTED.



KING VALLEY

THE KING VALLEY IS HOME TO EXCITING NEW MEDITERRANEAN WINE STYLES INCLUDING THOSE OF ITALIAN, SPANISH AND RUSSIAN HERITAGE AS WELL AS TRADITIONAL FRENCH VARIETIES. THE ITALIAN INFLUENCE IS EVIDENT IN THE WARMTH AND GENEROSITY OF THE PEOPLE OF THE VALLEY, WHERE FAMILY RUN CELLAR DOORS LIKE PIZZINI AND DALZOTTO PROMISE A MEMORABLE VISIT. THE HOSPITALITY EXTENDS INTO THE AWARD WINNING WINE AND GOURMET FOOD RESTAURANTS AND CAFES OF THE AREA INCLUDING CAFÉ CUCCINA AND SAM MIRANDA.

GLENROWAN

THE TOWNSHIP OF GLENROWAN IS THE SITE OF THE FINAL SIEGE AND CAPTURE OF NED KELLY AND HIS GANG IN 1880. THEIR STORY IS PRESERVED IN ITS ATTRACTIONS, MUSEUMS AND HISTORIC WALKS. 130 YEARS OF WINE GROWING HISTORY HAVE ALSO ESTABLISHED THE AREAS REPUTATION FOR FULL-BODIED REDS – WITH CELLAR DOORS INCLUDING BAILEY'S OF GLENROWAN WELL WORTH A STOPOVER. SWEEPING VIEWS FROM THE WARBY RANGE STATE PARK OUT OVER LAKE MOKOAN ALSO OFFER MANY OPTIONS FOR A PICTURESQUE PICNIC SPOT, BIRD WATCHING & BUSHWALKING.





QUALITY RESORT SIESTA ALBURY
416-422 WAGGA ROAD ALBURY NSW 2641
TELEPHONE 02 6025 4555
FACSIMILE 02 6040 1664
EMAIL INFO@SIESTA.COM.AU

QUALITY HOTEL WANGARATTA GATEWAY
29-37 RYLEY STREET WANGARATTA VIC 3677
TELEPHONE 03 5721 8399
FACSIMILE 03 5721 3879
EMAIL INFO@WANGARATTAGATEWAY.COM.AU

QUALITY HOTEL ON OLIVE
579 OLIVE STREET, ALBURY NSW 2640
TELEPHONE 02 6021 6100
FACSIMILE 02 6041 1803
EMAIL INFO@HOTELONOLIVE.COM.AU